



About us:

PNI-KMPG is an industry leader and innovator in Business Process Outsourcing (BPO). Complimented by a highly skilled software development team, we provide solutions to your back-office needs.

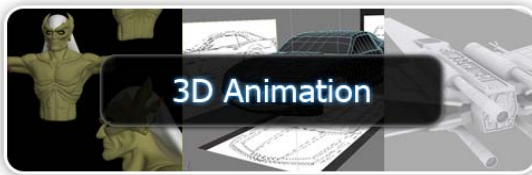
By combining your business objectives and expertise with our industry knowledge and talented workforce, we offer you a premier outsourced solution supported by the best technology in the industry. Whether you need ten or a hundred agents, with PNI-KMPG, you will receive focus and cost-effective solutions we are famous for.

The secret to our success is smart work and the fulfillment of our customer's needs.

Our Services



Animation Production Services



<http://kmpginc.com/creatives/video1.php>



<http://kmpginc.com/creatives/video3.php>



<http://kmpginc.com/creatives/video2.php>



<http://kmpginc.com/creatives/video4.php>

Original Content Animation Production

4 Projects under Development

Animation Training Facility





Our pool of animators is comprised of seasoned individuals with 20 years experience in traditional animation and 8 years in 3D animation. Our staffing network allows us access to numerous 2D, Flash and 3D digital animation talents whose work ranges from Hanna Barbera to Disney Television Productions and Film Features.

Preproduction:



- Storyboard
- Character Design
- Background and Environment Design
- Voice Recording
- Scriptwriting

Production:

- 2D animation
- Flash Animation
- 3D Animation

Post production:

- Special Effects
- Audio-Video Editing

Software expertise:

- 3D StudioMax
- Maya
- Adobe Flash
- Softimage XSI
- US Animation
- Animo
- ToolBoom
- Harmony



Infrastructure:

- 45mb internet circuit. Equipment used: Cisco 3825
- 45mb IPL to Los Angeles. Equipment used: Cisco 3845
- Additional internet bandwidth to Los Angeles, California.
- Los Angeles Core: Cisco 3750 Gigabit Stack, 32 Gigabit back plane
- Los Angeles Firewall: Cisco ASA 5520
- Manila Core: 3750 Gigabit Stack, 32 Gigabit back plane
- Manila Firewall: Cisco ASA 5520

Server Capacity:

- Desktop and server security using Microsoft Active Directory
- Running with redundant IBM 3550 servers.
- Permissions are tailored to the business unit needs, from full access, read only to no access.
- IBM 3550 dual quad core processors with 8 gb of RAM
- Servers are available for a small rendering farm.
- 200 PC level computers that can be added to the farm. Dual core systems with 2 to 4 gb of RAM.

Workstations:

- 12 Quad Core CPUs
- 8gb of RAM
- 1gb Dedicated Graphic Cards
- XP or Linux OS
- 19 inch LCD screens
- HD TVs to view rendered materials
- Bamboo Wacom tablets
- Headsets / Speakers

UPS and Backups:

- Building has emergency power provided by generators.
- Server room is backed-up by UPS with approximately 45 minutes of battery power.
- Database and content backups are ran daily and backed-up to tape weekly.